



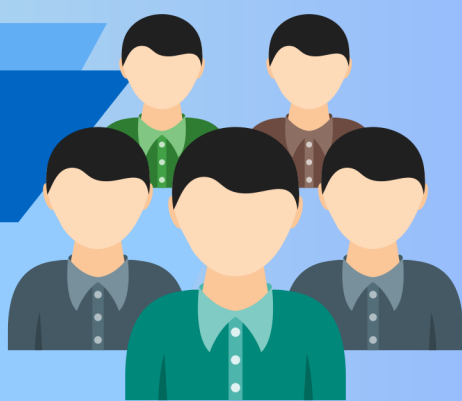
2024 MANDATORY BENEFIT ENROLLMENT



FREQUENTLY ASKED QUESTIONS, ANSWERED!

BEGINS Monday, July 22nd & **CLOSES** on Friday, August 9, 2024

www.mybenefitshub.com/cityoflaredo



WHO NEEDS TO ENROLL

All full-time employees with medical benefits are **required** to make a medical plan selection for the 2024/2025 Fiscal Year, even if you are waiving benefits or want to keep the same medical plan. **Failure to make a selection during the enrollment period, will default your medical plan to BCBSTX HMO Blue Essentials, a Texas only network.**

REVIEW CURRENT BENEFITS



Employees should review benefits each year - Our lives change and you should make sure your benefits match your current needs. It is also the perfect time to review your beneficiary information. **Flexible Spending Accounts** can only be adjusted during this enrollment period.

WILL THERE BE IN-PERSON ENROLLMENT ASSISTANCE



The HR Health & Benefits Team will be available to assist and answer questions at the following locations and times:

PUBLIC WORKS
5512 THOMAS AVE
JULY 22 - AUGUST 2, 2024
8:30AM - 4:30PM

CITY HALL ANNEX TRAINING ROOM
1102 BOB BULLOCK LOOP
AUGUST 5 - 9, 2024
8:30AM - 4:30PM

IS THERE AN EMPLOYER CONTRIBUTION INCENTIVE FOR CDHP MEDICAL PLAN ENROLLEES



For the Fiscal Year 2024-2025, Mayor & City Council approved a **\$750 Employer Incentive** to be deposited to your issued HSA Bank Card at the beginning of the Fiscal Year

BENEFIT EFFECTIVE DATES



Benefits selected during the benefit enrollment period will be effective October 1, 2024.



NO EXCEPTIONS FOR LATE ENROLLMENTS